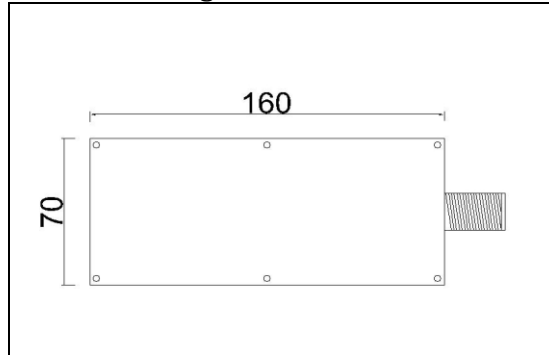
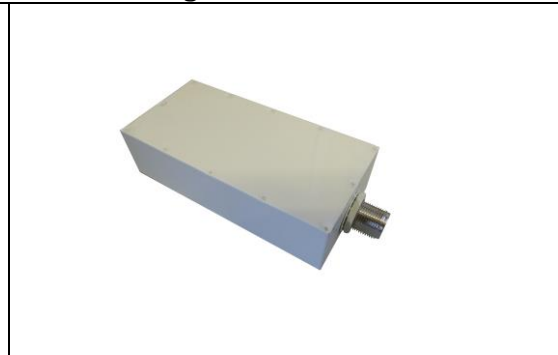


Antenna Type: 13dB Broad Coverage High Gain Antenna

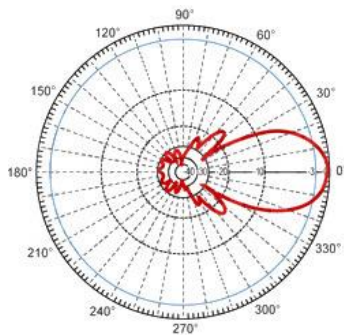
Technical Image



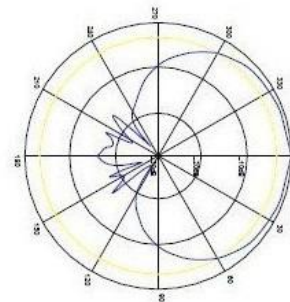
Actual Image



## Antenna Specifications



Vertical



Horizontal

Frequency Range:	S, C and X Bands (See Product Range)
Horizontal Beamwidth:	120° nominal
Azimuth Beamwidth:	+/- 25° nominal
Gain:	13dB nominal
VSWR:	< 1.4:1 across the band
RF Power Handling:	30W
Polarization:	RHC (LHC Available)
Mechanical Form:	Flat Panel
Size:	160x70x30 mm plus connector
Mounting:	4x M4 Tapped Holes 54x60mm Centres
RF Connector:	N Type Female Straight (Others Available)

## Product Range

Frequency	Gain	Part No	Dimensions
3.8Ghz - 4.2Ghz (S Band)	13dB	ANT13SSXS1	160mm x 70mm x 30mm
4.4Ghz - 5.0Ghz (C1 Band)	13dB	ANT13C1SXS1	160mm x 70mm x 30mm
6.0Ghz - 8.0Ghz (C Band)	13dB	ANT13CSXS1	160mm x 70mm x 30mm
8.4Ghz - 9.6Ghz (X Band)	13dB	ANT13XSXS1	160mm x 70mm x 30mm